

# TX-SR506 7.1-Channel Home Theater Receiver

SILVER BLACK



## Driving Entry-Level Home Theater with Power, Finesse and HD Media

In the case of Onkyo A/V receivers, "entry level" means a whole lot more than just affordability and standard functionality. You won't find a better example than the TX-SR506, which also offers high-definition media capability and advanced sound correction technologies. With an HDMI platform handling 1080p video from three sources, the TX-SR506 brings polish and peak performance to high-definition displays and sources. Legendary Onkyo amplification drive and power set the foundation for delivering bass crunch and vocal clarity. And, thanks to the latest Audyssey technologies, you get to enjoy a sweeping soundstage even at low volumes. Easily holding its own among higher-priced A/V receivers, the TX-SR506 adds serious impetus to entry-level home theater.

### Connecting up to Three HDMI-Enabled Sources for HDMI Pass-Thru\*

With three HDMI inputs and one output, the TX-SR506 is perfect for linking multiple HDMI-enabled sources to a high-definition display. With HDMI as the video conduit, the TX-SR506 will effortlessly transport and enable the full potential of Blu-ray Disc, HD DVD, standard DVD video, HD broadcasts and gaming. HDMI will deliver 720p, 1080i and 1080p video signals from up to three sources for one connection direct to your HDTV. Its 1080p pass-thru capability is perfect for getting the highest possible video resolution from PlayStation 3 and dedicated Blu-ray Disc and HD DVD players.

\* A separate audio connection is necessary to process multichannel audio.

### Switching Multiple Video Sources for Connection to High-Definition Displays

The TX-SR506 will partner any of today's most popular source components for connection to a high-definition display. We're talking an impressive selection here: Blu-ray Disc and HD DVD players; Xbox, PlayStation 3 and Wii gaming consoles; hard disk recorders and DVD players; and cable/set-top boxes. HDMI takes up to three sources for up to 1080p switching, while component video takes another two sources for up to 720p or 1080i switching.

### Correcting Room Distortion and Loudness with Audyssey 2EQ™ and Audyssey Dynamic EQ

The TX-SR506 uses Audyssey 2EQ to counter distortion created by walls, furniture, and other objects. This technology detects speaker distance, and then sets levels, delays, and crossovers, while also measuring room acoustics. Compared to one-position room correction systems, Audyssey 2EQ covers a much wider listening area. Moreover, it corrects problems in both frequency response and time domain (where most of the problems lie) across the entire listening area. The results are immediately obvious—a clear, well-balanced and natural sound.

After 2EQ calibration, Audyssey Dynamic EQ solves the problem of deteriorating sound quality at lower volumes. The professionals who create music and movies do so at reference levels much louder than typical home listening levels. When volume is reduced on a standard home theater receiver, the bass disappears, voices change, and the surround soundstage becomes less enveloping. As volume is adjusted on the TX-SR506, however, Dynamic EQ selects the best possible frequency response and surround levels moment-by-moment, resulting in an ideal listening experience at any volume level.



# TX-SR506 7.1-Channel Home Theater Receiver

## Music Optimizer to Support Compressed Digital Music Files

While MP3 or AAC files may sound fine on a portable digital player, the limitations of these compressed files can be exposed when played back through a home entertainment system. Onkyo has designed onboard Music Optimizer technology to improve the quality of the compressed audio signals. Compressed music loses a substantial amount of bit information at higher frequencies, so the Music Optimizer technology works to overcome this limitation and enhance audio quality.

## Playback of Different A/V Sources in Two Different Zones

With Powered Zone 2 and a Zone 2 line-out, you can enjoy surround-sound entertainment in the main room while you play back a completely different stereo source in a second zone equipped with an amplifier or a pair of speakers.

## Access to a Full Suite of Surround Sound and Hi-Def Audio Formats

The TX-SR506 has the onboard codecs to effectively reproduce stereo and multichannel sources in enveloping 6.1- or 7.1-channel surround sound. Also, by connecting a compatible Blu-ray Disc or HD DVD player with 5.1- or 7.1-line level outputs to the TX-SR506's 7.1-multichannel inputs, you'll be able to experience surround sound from Blu-ray Disc and HD DVD.

## Bi-Amping Capability for High-Impact Movies and Music

The TX-SR506's surround back speaker channels provide the ambience and effects for movies. They can also be used with the front left and right channels to provide two separate amplification channels for compatible bi-amping speakers (i.e., those with two sets of input terminals). In effect, bi-amping gives a more powerful, dynamic soundfield for two-channel music and movie sound effects.

## Fully Compatible with the iPod Family, Courtesy of the Onkyo RI Dock

The ubiquitous iPod has revolutionized how we listen to and store our music. With Onkyo's RI Dock (sold separately), you can integrate virtually any iPod model with your home theater system. Using the dock also gives you additional functionality when connected through Onkyo's Remote Interactive (RI) system.

## ADVANCED FEATURES

- HDMI Pass-Thru (1080p Compatible; 3 Inputs and 1 Output)\*
  - HDTV-Capable HDMI Video Switching
  - Audyssey 2EQ to Correct Room Acoustic Problems and to Calibrate Speakers
  - Audyssey Dynamic EQ for Loudness Correction
  - Powered Zone 2 and Zone 2 Line-Out for Playback in Another Room (Separate Source)
  - Bi-Amping Capability for Music and Movie Sound Effects
- \* A separate audio connection is necessary to process multichannel audio.

## AUDIO & VIDEO FEATURES

- 130 W/Ch Minimum into 6  $\Omega$ , 1 Channel Driven, IEC
- DTS®-ES™ Discrete/Matrix, DTS® Neo.6, DTS® 96/24, Dolby® Digital EX™, Dolby® Pro Logic IIx
- H.C.P.S. (High Current Power Supply) Massive High Power Transformer
- 192 kHz/24-Bit DACs for All Channels
- HDTV-Capable (720p/1080i) Component Video Switching (2 Inputs and 1 Output)
- WRAT (Wide Range Amplifier Technology)
- Advanced 32-Bit Processing DSP Chip
- 4 Digital Inputs (2 Optical, 2 Coaxial)
- 3 S-Video Inputs and 2 Outputs
- Subwoofer Pre Out
- CinemaFILTER™
- Pure Audio Mode
- A-Form Listening Mode Memory
- Optimum Gain Volume Circuitry
- Music Optimizer for Compressed Music Files
- Theater Dimensional Virtual Surround Function
- Double Bass Function
- Color-Coded 7.1-Multichannel Inputs (Receive 7.1 Surround Sound from Compatible Blu-ray Disc and HD DVD Players)
- Dual Banana Plug-Compatible Speaker Posts (Except Zone 2)
- Crossover Adjustment at 40/50/60/80/100/120/150/200 Hz for Bass Management
- A/V Synchronization Function (Up to 100 ms in 20 ms Steps)
- 40 FM/AM Radio Presets
- Compatible with RI (Remote Interactive) Dock for the iPod
- Front Panel Auxiliary Input (for Camcorders, Game Consoles, etc.)
- Newly Designed Preprogrammed RI (Remote Interactive) Remote Control with Mode-Key LEDs

## OTHER FEATURES

- Non-Scaling Configuration
- Tone Control (Bass/Treble) for Front L/R Channels
- 4 Composite Video Inputs and 2 Outputs
- 4 A/V Inputs and 1 Output
- 2 Audio Inputs and 1 Output
- Digital Upsampling
- Display Dimmer (Normal/Dim/Dimmer)
- RDS (PS/RT/PTY/PT)
- Headphone Jack
- Sleep Timer (via Remote)
- Battery-Free Memory Backup

## SPECIFICATIONS

### AMPLIFIER SECTION

<b>Power Output</b>	
Front L/R	130 W + 130 W (6 $\Omega$ , 1 kHz, 1 channel driven, IEC)
Center	130 W (6 $\Omega$ , 1 kHz, 1 channel driven, IEC)
Surround L/R	130 W + 130 W (6 $\Omega$ , 1 kHz, 1 channel driven, IEC)
Surround Back L/R	130 W + 130 W (6 $\Omega$ , 1 kHz, 1 channel driven, IEC)
<b>Dynamic Power</b>	
	180 W (3 $\Omega$ , 1 ch)
	160 W (4 $\Omega$ , 1 ch)
	100 W (8 $\Omega$ , 1 ch)
<b>THD (Total Harmonic Distortion)</b>	
	0.08% (Rated power)
<b>Damping Factor</b>	
	60 (Front, 1 kHz, 8 $\Omega$ )
<b>Input Sensitivity and Impedance</b>	
	200 mV/47 k $\Omega$ (Line)
<b>Output Level and Impedance</b>	
	200 mV/2.2 k $\Omega$ (Rec out)
<b>Frequency Response</b>	
	5 Hz–100 kHz+1 dB, -3 dB
<b>Tone Control</b>	
	$\pm$ 10 dB, 50 Hz (Bass)
	$\pm$ 10 dB, 20 kHz (Treble)
<b>Signal-to-Noise Ratio</b>	
	100 dB (Line, IHF-A)
<b>Speaker Impedance</b>	
	4 $\Omega$ –16 $\Omega$ or 6 $\Omega$ –16 $\Omega$

### VIDEO SECTION

<b>Input Sensitivity/Output Level and Impedance</b>	
Video	1 Vp-p/75 $\Omega$ (Component and S-Video Y)
	0.7 Vp-p/75 $\Omega$ (Component Pb/Ca, Pr/Cr)
	0.28 Vp-p/75 $\Omega$ (S-Video C)
	1 Vp-p/75 $\Omega$ (Composite)
<b>Component Video Frequency Response</b>	
	5 Hz–50 MHz, -3 dB

### TUNER SECTION

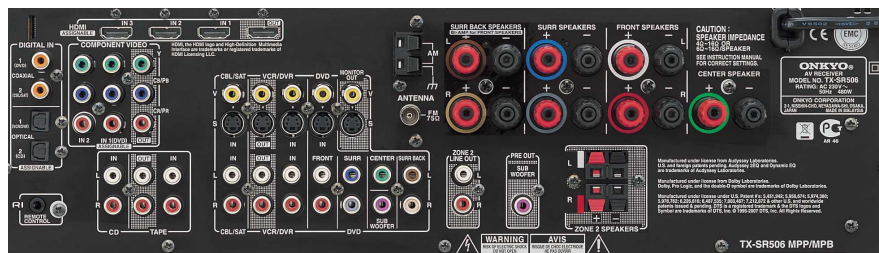
<b>Tuning Frequency Range</b>	
FM	87.5 MHz–108 MHz
AM	522 kHz–1,611 kHz
<b>FM/AM Preset Memory</b>	
	40 stations

### GENERAL

<b>Power Supply</b>	AC 230 V, 50 Hz
<b>Power Consumption</b>	480 W
<b>Dimensions (W x H x D)</b>	435 x 149.6 x 379.2 mm
<b>Weight</b>	10.6 kg

### ■ CARTON

<b>Dimensions (W x H x D)</b>	537 x 268 x 465 mm
<b>Weight</b>	13.6 kg



Due to a policy of continuous product improvement, Onkyo reserves the right to change specifications and appearance without notice. Manufactured under license from Dolby Laboratories. Dolby and the double-D symbol are trademarks of Dolby Laboratories. DTS is a registered trademark and the DTS logos and Symbol are trademarks of DTS, Inc. Manufactured under license from Audyssey Laboratories. U.S. and foreign patents pending. 2EQ and Dynamic EQ are trademarks of Audyssey Laboratories. HDMI, the HDMI logo and High-Definition Multimedia Interface are trademarks of registered trademarks of HDMI Licensing LLC. iPod is a trademark of Apple Inc., registered in the U.S. and other countries. CinemaFILTER and Theater Dimensional are trademarks of Onkyo Corporation. All other trademarks and registered trademarks are the property of their respective holders.

**ONKYO**  
IMAGINATIVE SIGHT & SOUND

Onkyo Corporation 2-1 Nishishin-cho, Neyagawa-shi, Osaka 572-8540, JAPAN Tel: +81-72-831-8136 Fax: +81-72-833-5222 <http://www.onkyo.com/>  
Onkyo Europe Electronics GmbH Liegiltzerstrasse 6, 82194 Grobenzell, GERMANY Tel: +49-8142-4401-0 Fax: +49-8142-4401-555 <http://www.eu.onkyo.com/>  
Onkyo UK Office Suite 1 Gregories Court, Gregories Road, Beaconsfield, Buckinghamshire HP9 1HD, UNITED KINGDOM Tel: +44(0)1494-681515 Fax: +44(0)1494-680452 <http://www.onkyo.co.uk>